

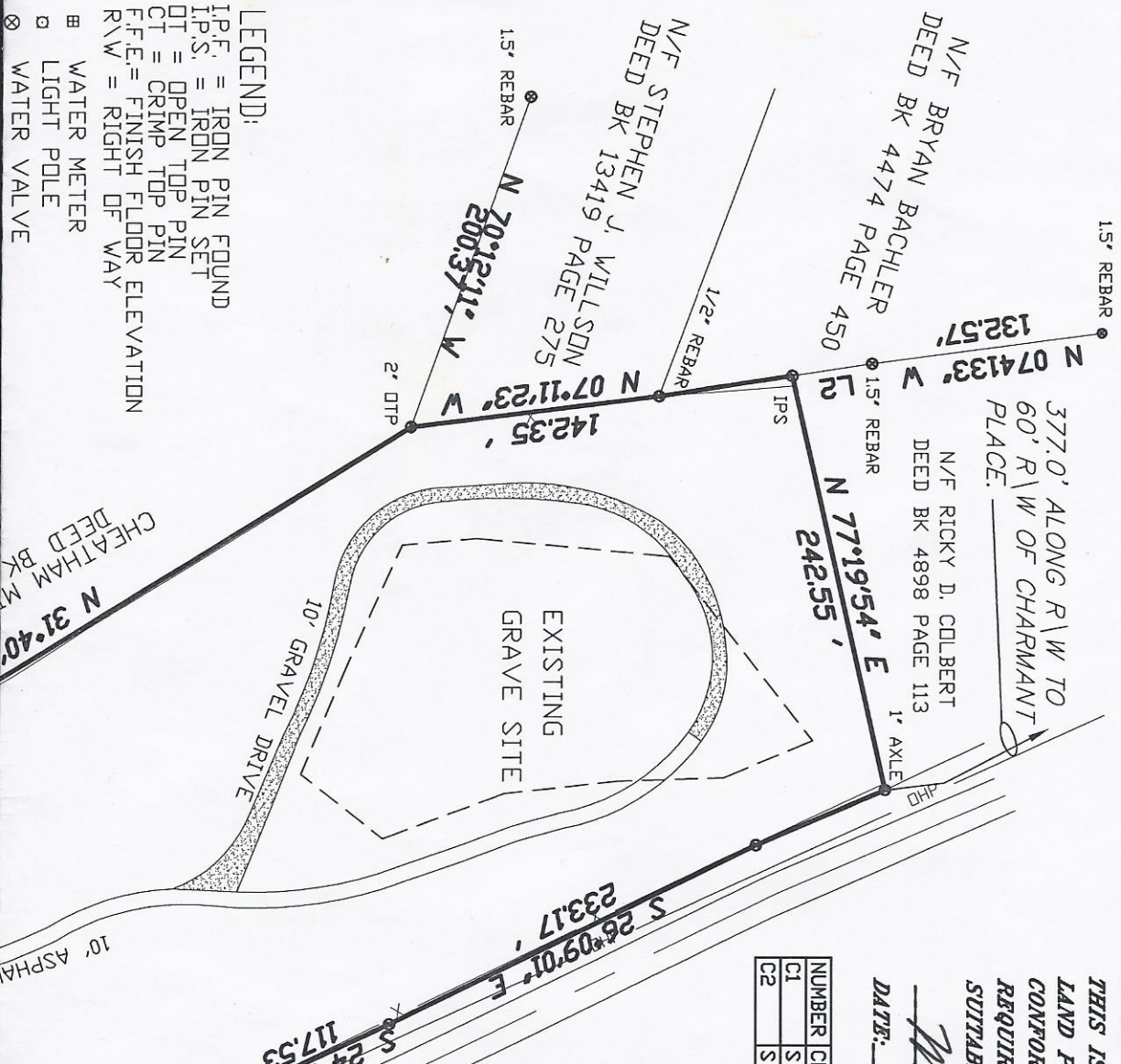
**IN MY OPINION,
THIS IS A CORRECT REPRESENTATION OF THE
LAND PLATTED AND HAS BEEN PREPARED IN
CONFORMITY WITH THE MINIMUM STANDARDS AND
REQUIREMENTS OF GEORGIA LAW 1978 AND IS
SUITABLE FOR RECORDING.**

Mike T. Howard R.L.S.

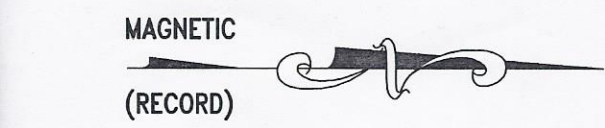
DATE: 8-17-2004

NUMBER	CHORD DIRECTION	RADIUS	ARC LENGTH	CHORD LENGTH
C1	S 17°01'17" E	902.33	294.45	293.14
C2	S 01°51'12" E	1284.43	228.26	227.96

NUMBER	BEARING	DISTANCE
L1	N 08°49'00" W	76.86 FT
L2	N 08°49'00" W	45.99 FT
L3	S 23°21'40" E	80.00 FT
L4	S 85°02'18" W	92.84 FT



WINTERS CHAPEL ROAD
(60' R/W)

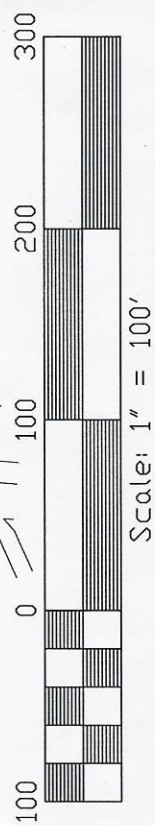
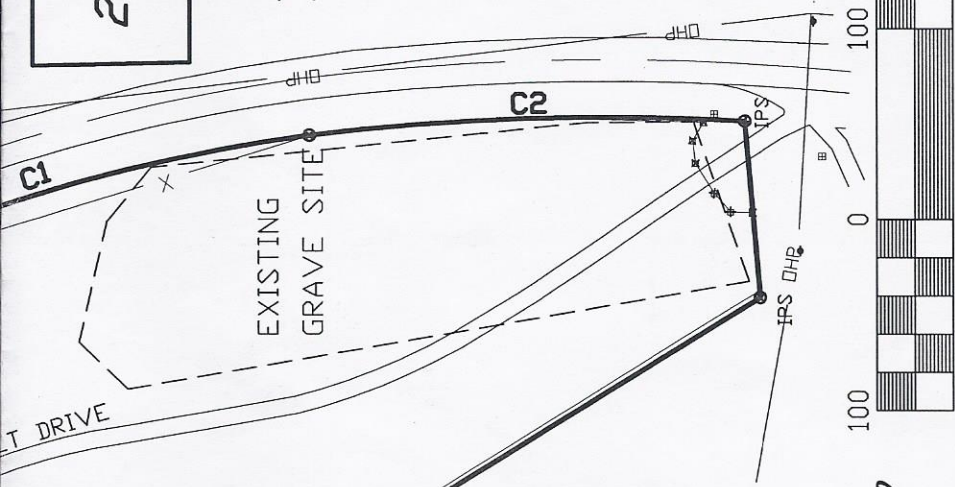


LEGEND:
 I.P.F. = IRON PIN FOUND
 I.P.S. = IRON PIN SET
 DT = OPEN TOP PIN
 CT = CRIMP TOP PIN
 F.F.E. = FINISH FLOOR ELEVATION
 R/W = RIGHT OF WAY
 ■ WATER METER
 □ LIGHT POLE
 ⊗ WATER VALVE

- ☉ FIRE HYDRANT
- UTILITY POLE
- x — FENCE
- o — POWER
- GRAVE SITES AREA
- ▭ GRAVEL DRIVE

AREA:
227,862 SQ. FT.
5.2310 Acres

ZONED: R-100
SETBACKS:
FRONT = 35'
SIDE = 10'
REAR = 40'



CONCRETE PAVILION
746.23'
MEMORIAL PARK
7224 PAGE 155

PLAT REFERENCES:
1) PLAT FOR FONTAINEBLEAU FOREST SUBDIVISION, PREPARED BY JULIAN SWAIN, DATED FEBRUARY 12, 1958. RECORDED IN PLAT BOOK 52, PAGE 144.
2) PLAT FOR PARKER RANCH, PREPARED BY E.Z. HUFF, DATED NOVEMBER 25, 1958. RECORDED IN PLAT BOOK 28, PAGE 128.

THE FIELD DATA ON WHICH THIS MAP OR PLAT IS BASED HAS A CLOSURE PRECISION OF ONE FOOT IN 30,572 FEET AND AN ANGULAR ERROR OF 06 SECONDS PER ANGLE POINT, AND WAS ADJUSTED USING THE COMPASS RULE METHOD. THIS MAP OR PLAT HAS BEEN CALCULATED FOR CLOSURE AND IS FOUND TO BE ACCURATE WITHIN ONE FOOT IN 2,885,708 FEET.
TYPE OF EQUIPMENT: TOPCON GTS - 313

SURVEY NOTES:

- 1) ACCORDING TO F.I.R.M. MAP NO. 13C89C 0010H, DATED 5-07-2001. THIS PROPERTY IS NOT LOCATED WITHIN A SPECIAL FLOOD HAZARD AREA.
- 2) THE NORTH MERIDIAN SHOWN HEREON IS BASED ON MAGNETIC NORTH.
- 3) THE FIELD & TOPOGRAPHIC SURVEY FOR THIS PROPERTY WAS PERFORMED ON AUGUST 6, 2004.

EIDSON CEMETERY
LAND LOTS 307
6th DISTRICT
DEKALB COUNTY, GEORGIA

BOUNDARY SURVEY

COMMISSION	704126100
DATE	AUGUST 13, 2004
REVISED DATE	
DRAWN BY:	JDS
CHECKED BY:	MTH

SCALE 1" = 100'
SHEET NUMBER
SH.1



HUSSEY, GAY, BELL & DEVOUNG
ENGINEERS & SURVEYORS
625 Green Street N.E.
Gainesville, Ga 30501
Tel. (770) 535-1133
Fax (770) 535-1134